

# Industrial Power Modules

## Thyristor Modules

Circuit No.	ECG No.	ECG No.	ECG No.	ECG No.	ECG No.	ECG No.	ECG No.
1		5710		5720			
2		5711		5721			
3		5712		5722			
6	5708		5714		5724	5726	5728
<b>IT (AV)*</b>	<b>25 A</b>	<b>65 A</b>	<b>65 A</b>	<b>95 A</b>	<b>95 A</b>	<b>160 A</b>	<b>250 A</b>
<b>IT (RMS)*</b>	<b>60 A</b>	<b>120 A</b>	<b>120 A</b>	<b>150 A</b>	<b>160 A</b>	<b>350 A</b>	<b>550 A</b>
<b>VDRM</b>	1600 Volts	1200 Volts	1600 Volts	1200 Volts	1600 Volts	1600 Volts	1600 Volts
<b>VF</b>	1.95 Volts	1.45 Volts	1.6 Volts	1.34 Volts	1.6 Volts	1.5 Volts	1.45 Volts
<b>IH</b>	200 mA	250 mA	200 mA	250 mA	200 mA	500 mA	500 mA
<b>ITSM (1 Cycle)</b>	420 A	1500 A	740 A	1900 A	1870 A	5300 A	8900 A
<b>I<sup>2</sup>T</b>	730 A <sup>2</sup> sec	9300 A <sup>2</sup> sec	12.5 KA <sup>2</sup> sec	15 KA <sup>2</sup> sec	14.5 KA <sup>2</sup> sec	119 KA <sup>2</sup> sec	330 KA <sup>2</sup> sec
<b>RTHCS</b>	.35° C/W	.08° C/W	.1° C/W	.08° C/W	.1° C/W	.17° C/W	.03° C/W
<b>T<sub>J</sub> (Max)</b>	+ 125° C	+ 125° C	+ 125° C	+ 140° C	+ 125° C	+ 125° C	+ 125° C
<b>dv/dt</b>	500 V/μsec	200 V/μsec	500 V/μsec	200 V/μsec	500 V/μsec	500 V/μsec	500 V/μsec
<b>T<sub>q</sub></b>	150 μsec	150 μsec	150 μsec	150 μsec	150 μsec	150 μsec	150 μsec
<b>VGT (Max)</b>	2.5 Volts	1.5 Volts	2.5 Volts	1.5 Volts	2.5 Volts	3 Volts	3 Volts
<b>IGT (Max)</b>	150 mA	200 mA	150 mA	200 mA	150 mA	200 mA	200 mA
<b>PGT (Max)</b>	2.5W	20 W	3 W	20 W	3 W	2 W	2 W

\* Per SCR or Rectifier

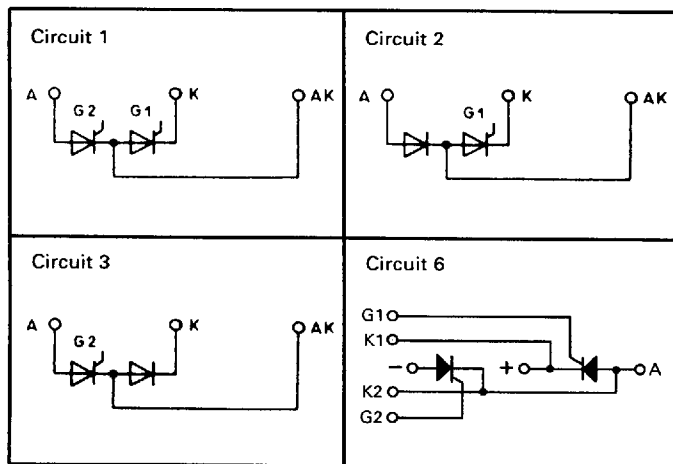


Fig. M1

**ECG**

5708  
5710  
5711  
5712  
5714  
5720  
5721  
5722  
5724

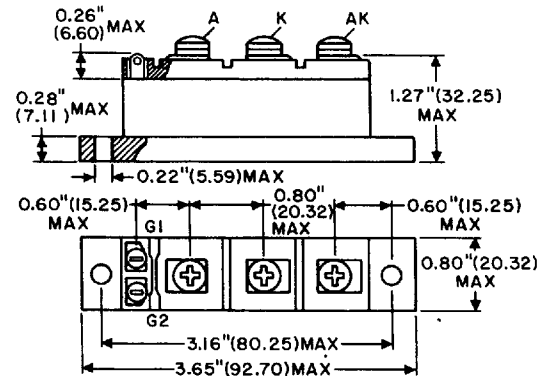
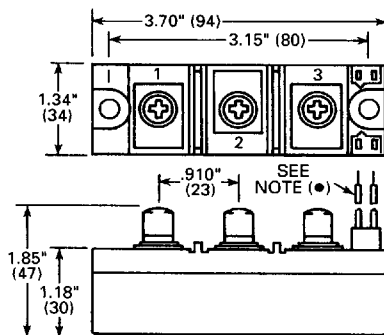


Fig. M1-1

**ECG**

5726\*

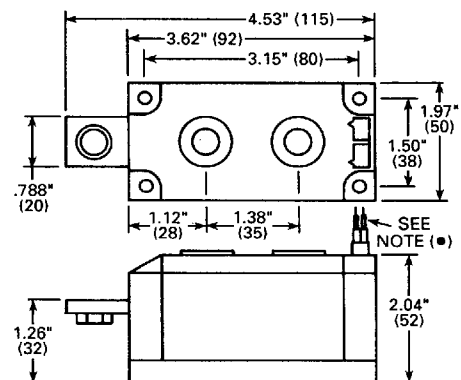


\* 5726 has wire leads

Fig. M-6

**ECG**

5728\*



\* 5728 has wire leads

6653928 0009265 5T3