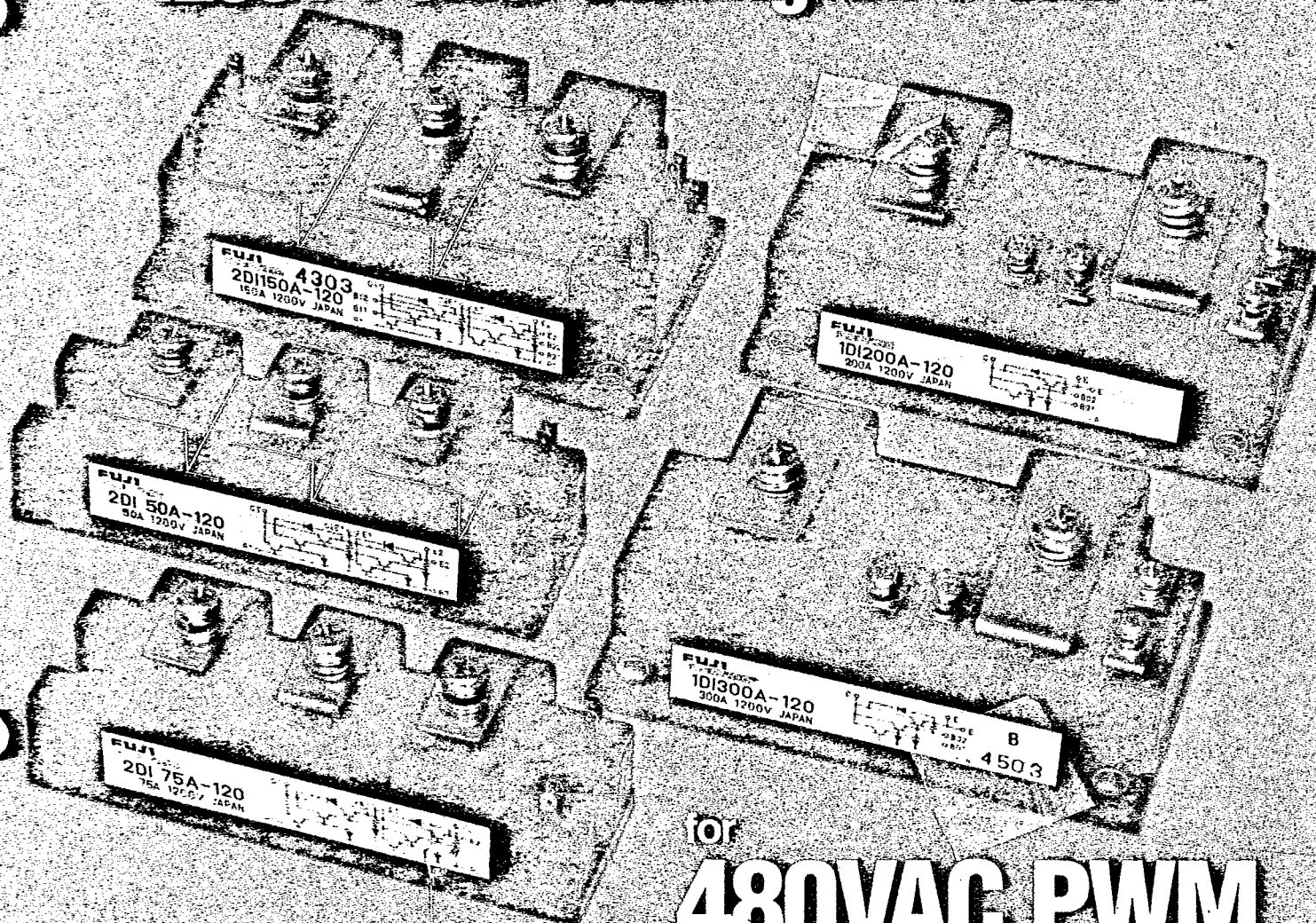


From **FUJI**
ELECTRIC The Leader in Power Transistor Technology

1200V Power Darlington Modules



for

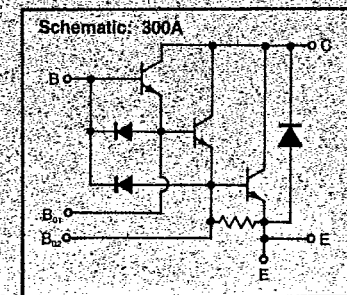
480VAC PWM

- 200 A and 300 A Single-Darlington, 50, 75, 100 and 150A Dual-Darlington, Six-Darlington Modules
- Low Saturation Voltage
- High Gain
- High Switching Speed
- Wide RBSOA and FBSOA
- Virtually Snubberless
- Discrete-Chip, Fast-Recovery Diode
- Easily Paralleled
- Also available: 500V & 1000V, 15A to 200A (I_c) Ratings

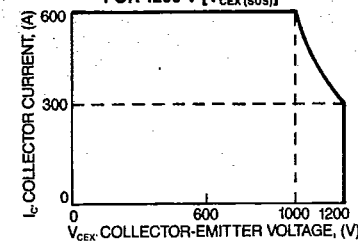
These 1200V [$V_{CEX(SUS)}$] Darlington Power Modules from Fuji can be connected directly to a 480V line. They are designed primarily for reliable, 480VAC PWM application. They have wide RBSOA and FBSOA, high gain, and high switching speeds.

Available in: 200A and 300A Single-Darlington; 50A, 75A, 100A, and 150A Dual-Darlington; and Six-Darlington Modules. They incorporate discrete-chip, fast-recovery diodes, built-in free-wheeling diodes, and triple-diffused planar transistors for dependable high-efficiency operation.

The electrically-isolated packages and convenient screw-type terminals simplify circuit design, save space, and contribute to system cost effectiveness.



TYPICAL REVERSE BIASED SAFE OPERATING AREA FOR 1200 V [$V_{CEX(SUS)}$]



Call or write for complete information:

FUJI Semiconductors • Imported and Distributed by:

Collmer Semiconductor, Inc.

14368 PROTON • DALLAS, TEXAS 75244 • 214/233-1589



FUJI ELECTRIC DARLINGTON POWER MODULES

1200V

PART NUMBER	Ic	STYLE	VCEX(SUS)	VCEO(SUS)	hFE	PC **
1DI200A-120	200A	Single	1200V	1000V	70	1500W
1DI300A-120	300A	Single	1200V	1000V	70	2000W
2DI30A-120	30A	Dual	1200V	1000V	70	200W
2DI50A-120	50A	Dual	1200V	1000V	70	400W
2DI75A-120	75A	Dual	1200V	1000V	70	500W
2DI100A-120	100A	Dual	1200V	1000V	70	800W
2DI150A-120	150A	Dual	1200V	1000V	70	1000W

1000V

ET1275	15A	Single	1000V	700V	20	120W
ET1273	50A	Single	1000V	800V	100	400W
ET1255	100A	Single	1000V	800V	200	1000W
ET1256*	200A	Single	1000V	800V	200	2000W
ET1257*	200A	Single	1000V	800V	4	1500W
ET1266M (VVI)	200A	Single	900V	850V	35	1000W
EV1274	20A	Dual	1000V	800V	100	200W
EV1277	30A	Dual	1000V	800V	100	300W
EV1234	50A	Dual	1000V	800V	100	500W
EV1234M (VVI)	50A	Dual	900V	850V	35	300W
EV1235	50A	Dual	1000V	800V	100	500W
EV1255	100A	Dual	1000V	800V	100	800W
EV1298	150A	Dual	1000V	800V	70	1000W

500V

ETF81-050	15A	Single	600V	450V	100	100W
ETG81-050	30A	Single	600V	450V	100	200W
ETK81-050	50A	Single	600V	450V	100	300W
ETK85-050	75A	Single	600V	450V	70	350W
ETL81-050	100A	Single	600V	500V	100	600W
ET127*	100A	Single	600V	450V	100	960W
ETM36-030*	200A	Single	320V	200V	150	1000W
ETN36-030*	300A	Single	320V	300V	150	1500W
ETN81-055	200A	Single	600V	550V	70	1000W
ETN31-055*	200A	Single	600V	550V	70	1500W
ETN85-050	300A	Single	600V	450V	70	1200W
EVG31-050/A	30A	Dual	600V	450V	100	200W
EVK31-050/A	50A	Dual	600V	450V	100	300W
EVK71-050/A	75A	Dual	600V	450V	70	350W
EVL31-050/A	100A	Dual	600V	450V	100	500W
EVM31-050/A	150A	Dual	600V	500V	70	600W
EVF31T-050A	15A	6-Pack	600V	450V	100	100W

* Not Isolated

** Power rating is per each Darlington