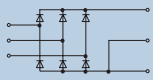
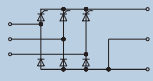
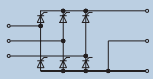
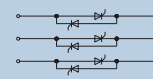


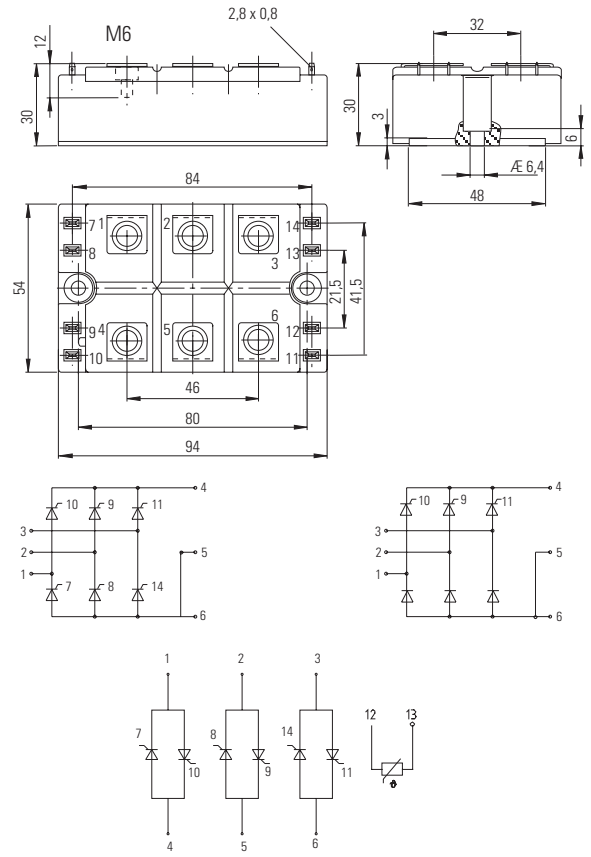
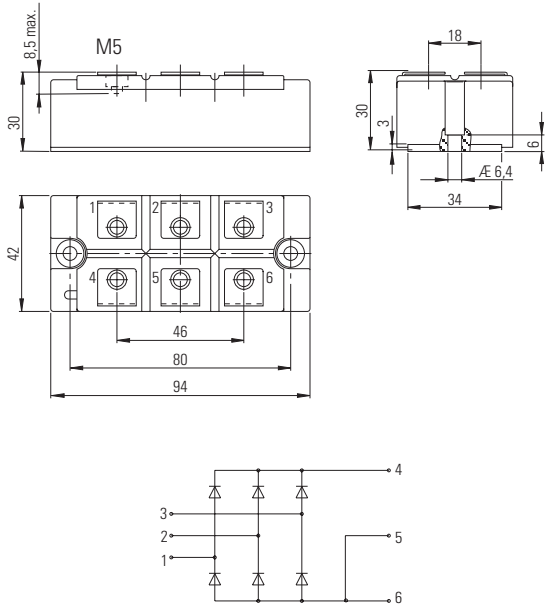
eupec™ IsoPACK™ Bridge Rectifier

Type	V_{DRM}, V_{RRM} V $V_{DSM} = V_{DRM}$ $V_{RSM} =$ $V_{RRM} + 100V$	I_{FRMSM} (I_{TRMSM}) A	I_{FSM} (I_{TSM}) A 10 ms $T_{vj\ max}$	I_d/T_c A/°C	$V_{(TO)}$ V $T_{vj} =$ $T_{vj\ max}$	r_T mΩ $T_{vj} =$ $T_{vj\ max}$	R_{thJC} °C/W per arm 120° el Square wave	$T_{vj\ max}$ °C	Outline/ page	
 3 phase bridge rectifier, uncontrolled	DDB6U85N16L	1600	60	550	85/100	0,75	5,50	1,45	150	M_1Pa/5.9
	DDB6U145N16L	1600	100	1000	145/100	0,75	3,10	0,89	150	M_1Pa/5.9
	DDB6U205N16L	1600	120	1375	205/100	0,75	2,20	0,59	150	M_1Pa/5.9
	DDB6U215N16L	1600	125	1850	215/100	0,75	1,60	0,49	150	M_1Pa/5.9
 3 phase bridge rectifier, half controlled	TDB6HK95N16LOF	1600	75	620	95/85	0,95	5,50	0,82	125	M_1Pb/5.9
	TDB6HK135N16LOF	1600	100	870	135/85	0,95	4,30	0,59	125	M_1Pb/5.9
	TDB6HK165N16LOF	1600	120	1050	165/85	0,95	3,20	0,49	125	M_1Pb/5.9
 3 phase bridge rectifier, fully controlled	TTB6C95N16LOF	1600	75	620	95/85	0,95	5,50	0,82	125	M_1Pb/5.9
	TTB6C135N16LOF	1600	100	870	135/85	0,95	4,30	0,59	125	M_1Pb/5.9
	TTB6C165N16LOF	1600	120	1050	165/85	0,95	3,20	0,49	125	M_1Pb/5.9

eupec™ IsoPACK™ AC-Switches

Type	V_{DRM}, V_{RRM} V $V_{DSM} = V_{DRM}$ $V_{RSM} =$ $V_{RRM} + 100V$	I_{FRMSM} (I_{TRMSM}) A	I_{FSM} (I_{TSM}) A 10 ms $T_{vj\ max}$	I_d/T_c A/°C	$V_{(TO)}$ V $T_{vj} =$ $T_{vj\ max}$	r_T mΩ $T_{vj} =$ $T_{vj\ max}$	R_{thJC} °C/W per arm 120° el Square wave	$T_{vj\ max}$ °C	Outline/ page	
 3 phase AC-Switches, fully controlled	TTW3C85N16LOF	1600	75	620	85/85	0,95	5,50	0,70	125	M_1Pb/5.9
	TTW3C115N16LOF	1600	100	870	115/85	0,95	4,30	0,50	125	M_1Pb/5.9
	TTW3C145N16LOF	1600	120	1050	145/85	0,95	3,20	0,42	125	M_1Pb/5.9

eupec™ IsoPACK™ modules are UL recognized



IGBT
Low Power

IGBT
Medium Power

IGBT
High Power

Solutions

SCR
Diode Modules

Presspacks

Explanations